



Edition 0622



# **POLICE, FIRE AND RESCUE PRODUCTS**







B&B Enterprises, Inc. is your  
one stop metal shop for all  
your department needs,  
from storage pan and boxes,  
to sliders and consoles.

We are also home to the Amp Master™  
Wiring System and the  
Weapon Armour™ Gun Rack.

Many items can be custom built  
to fit your unique situation.



# CONTENTS

Introduction	<b>4</b>
Window Bars	<b>6</b>
Door Panels	<b>7</b>
Radio Consoles	<b>8</b>
Console Accessories	<b>13</b>
Weapon Armour® Gun Rack Systems	<b>14</b>
Weapon Armour® High Security Guards	<b>17</b>
Storage Pans	<b>19</b>
Sliders	<b>22</b>
Storage Boxes	<b>23</b>
Utility and Work Truck Accessories	<b>28</b>
Bracket and Accessories	<b>29</b>





## **INTRODUCTION**

Thank you for taking the time to look at our products. B&B Enterprises has been manufacturing metal products since 1985 when Robert “Bo” Jackson and his welder began in his backyard. Over the last 25 years we have grown into a complete metal fabrication operation housed in 12,500 sq. ft. facility. We have gone from manufacturing overhead door brackets and mini warehouses to custom corporate displays and emergency vehicle products.

Along the way, B&B Enterprises has always focused on quality workmanship and an attention to detail. We are proud of our humble beginnings and we never forget that our customers are the most important people in the world.

We began manufacturing metal products for the police, fire and emergency markets in 2002, there was a growing need for custom storage boxes and specialty pans which was right in line with our capabilities.

B&B Enterprises developed a reputation for manufacturing high quality, durable products that could withstand the harsh emergency response environment and demand for our products grew.

We recently introduced the Weapon Armour® Gun Rack System a fully adjustable, user friendly, high secure gun rack system which offers some of the most secure options on the market today.

We hope you take the time to look at all B&B Enterprises has to offer and think of us the next time your department needs a quality product that works as hard as you do.

As a full service custom metal job shop and metal manufacturer we offer mig and tig welding, plasma cutting, milling, shearing, punching and bending, machining and lathe work.





**When quality counts  
our customers depend  
on B&B to deliver**



## WINDOW BARS

### Features:

- 3/8" solid steel bars
- Fully powder coated for durability
- Must specify steel or factory door panels

PART NO.	VEHICLE
239-2056-15	Tahoe 2015-2020
239-3015	Ford Interceptor SUV 2013-2019
239-3015-20	Ford Interceptor SUV 2020+ vertical
239-3015-H-20	Ford Interceptor SUV 2020+ horizontal
239-3009-SIDE	Ford F-150 2015+ Side (side windows only)
239-3007	Chevy Silverado Side (side windows only)
239-3025	Dodge Durango PPV 2021+
239-3025-H	Dodge Durango PPV horizontal
239-3001-20	Dodge Charger 2020+

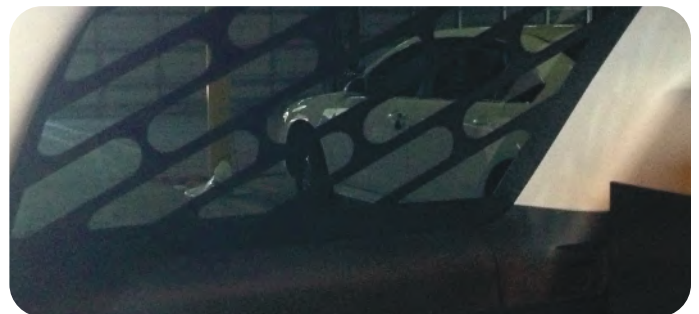
## WINDOW GUARDS

### 3 Pc. Window Bar Sets

PART NO.	VEHICLE
239-3007-19	Chevy Silverado 2019+
239-3009-21	Ford F-150 2021+
239-3011	Ford F-250
239-3011-17	Ford F-250 2017 and newer
239-3014	Dodge Ram

### 3 Pc. Window Screen Guards

PART NO.	VEHICLE
239-3015-3	Ford PI SUV 2013-2019
239-3016-21	Chevy Tahoe 2021+



Tahoe Cargo Screen



## DOOR PANELS

### 18 Ga. Steel Door Panels:

PART NO.	VEHICLE
225-4333	Chevy Silverado
225-4334-ST15	Chevy Tahoe 2015-2020
225-4340-ST	Ford PI SUV 2013-2019
225-4338-15	Ford F-150
225-4339	Dodge Ram
225-4337	Ford Expedition
225-4345	16 Ga. steel rear door panels Dodge Charger 2020+ horizontal

\*\* Older vehicle models may be available upon request



Tahoe WB Door Panel



## RADIO CONSOLES

### Universal Angled Consoles

#### Features:

- 14 ga. steel construction
- Welded and powder coated
- Offers 7" of slanted faceplate and 7" or 11" of flat faceplate



015-3023-18

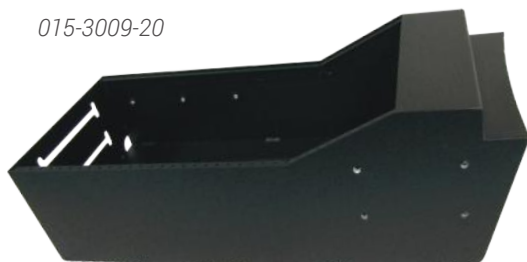
PART NO.	DIMENSIONS
015-3023-18	23-7/8" x 11-3/8" x 9"
015-3023-18S	23-7/8" x 8-3/8" x 9"



015-3025-18

### Universal Flat Consoles

PART NO.	DIMENSIONS
015-3025-14	17-3/8" x 11-3/8" x 9"
015-3025-18	23-7/8" x 11-3/8" x 9"
015-3025-18S	23-7/8" x 8-3/8" x 9"



015-3009-20

### Vehicle Specific

PART NO.	VEHICLE
015-3027	PI SUV – 18-1/2" x 11" x 8-3/8" 2013-2019
015-3059	Tahoe console - 18" of faceplate (7" slanted and 11" flat) 11-1/4" front height and 8" rear height and 13" wide. Includes 4-1/4" x 11" bppk/map pocket, speaker cutouts, power adapter cutouts and inverter cutout. Overall console length 21-1/4", overall length including under dash 32-1/2". 2015-2020
015-3059-TK25	Truck Console - 25" of faceplate (7" slanted and 18" flat) 11-1/4" front height and 8" rear height and 13" wide. 4x4 cutout
015-3063-TK	Truck Console - 25" of faceplate (7" slanted and 18" flat) 11 1/4" front height and 8" rear height and 13" wide. Includes cupholder on right hand side and storage cubby, speaker cutouts, power adapter cutouts with 12V power and USB cutout with Dual USB Kussmaul port.
225-3035	Interceptor Console (2020+) 22" of faceplate, 7" slanted, 15" flat, 9" tall at front and 6-3/8" tall at rear. Includes E-brake cutout, speaker cutout. Overall length 24"
015-3009-20	Contoured Dodge Charger (2020+) console, 18" of faceplate area, 5" slanted and 13" flat (front height 7-1/4", rear height 5", overall length 22")
015-3007	Dodge Charger Console (2020+) - 18" of flat faceplate area. Overall dimensions 8-3/4" wide x 22" long)



### Console Packages Include:

- Vehicle Floor Plate for Installing
- Armrest
- Cupholder
- Lower Pole
- Upper Pole
- Computer Mount
- One Part Number
- Great Price

### 5001 - Console 1 Package for F-150

PART NO.	VEHICLE
015-3063-TK	Truck Console - 25" of faceplate (7" slanted and 18" flat) 11-1/4" front height and 8" rear height and 13" wide. Includes cupholder on right hand side and storage cubby, speaker cutouts, power adapter cutouts with 12V power and USB cutout with Dual USB Kussmaul port. <i>*Includes radio and blank faceplates up to 25"</i> .
121-3505	Padded Armrest Overall dimensions 8-5/8" tall Armrest is 10" long x 4" wide.
710-5906	Lower 5 style mounting pole.
710-5901-9	Upper mounting pole with plate, 8" tall Pole includes 9" plate with 5" of travel.
225-3002	Tilt Swivel for mounting on an upper plate or a Comp-Tilt (DS-Clevis).
121-3567	Console floorplate for a F150. (2015+)

### 5002 - Console 2 Package for Dodge RAM (1500, 2500 and 4500)

PART NO.	VEHICLE
015-3059-TK	Truck Console - 25" of faceplate (7" slanted and 18" flat) 11-1/4" front height and 8" rear height and 13" wide. Includes 4-1/4" x 11" book/map pocket, speaker cutouts, power adapter cutouts and inverter cutout. Overall console length 29". Includes cut out for floor shifter. <i>*Includes radio and blank faceplates up to 21"</i> .
121-3568	Dodge Ram (1500, 2500, 4500) Console Floorplate - 28" long includes leg kit. (2014+) Also works with 4x4.
121-3510	Dual Cupholder to fit inside console - Faceplate style includes plastic inserts.
121-3505	Padded Armrest Overall dimensions 8-5/8" tall Armrest is 10" long x 4" wide.
710-5906	Lower 5 style mounting pole.
710-5901-9	Upper mounting pole with plate, 8" tall Pole includes 9" plate with 5" of travel.
225-3002	Tilt Swivel for mounting on an upper plate or a Comp-Tilt (DS-Clevis)





225-3035



**5003 - Interceptor Console 3 Package**

PART NO.	VEHICLE
225-3035	Interceptor Console (2020+) 22" of faceplate , 7" slanted, 15" flat, 9" tall at front and 6 3/8" tall at rear. Includes E-brake cutout, speaker cutout. Overall length 24". <i>*Includes radio and blank faceplates up to 18". (Does not require a console floorplate for mounting console).</i>
121-3505	Padded Armrest Overall dimensions 8-5/8" tall Armrest is 10" long x 4" wide.
710-5906	Lower 5 style mounting pole.
710-5901-9	Upper mounting pole with plate, 8" tall Pole includes 9" plate with 5" of travel.
225-3002	Tilt Swivel for mounting on an upper plate or a Comp-Tilt (DS-Clevis).
425-3035	Interceptor 2020 Rear Air Relocation Faceplate. Available if needed. N/C

**5004 - Console 1 Package for Chevrolet-Silverado 1500/2500 (2019+)**

PART NO.	VEHICLE
015-3063-TK	Truck Console - 25" of faceplate (7" slanted and 18" flat) 11-1/4" front height and 8" rear height and 13" wide. Includes cupholder on right hand side and storage cubby, speaker cutouts, power adapter cutouts with 12V power and USB cutout with Dual USB Kussmaul port. <i>*Includes radio and blank faceplates up to 25".</i>
121-3505	Padded Armrest Overall dimensions 8-5/8" tall Armrest is 10" long x 4" wide.
710-5906	Lower 5 style mounting pole.
710-5901-9	Upper mounting pole with plate, 8" tall Pole includes 9" plate with 5" of travel.
225-3002	Tilt Swivel for mounting on an upper plate or a Comp-Tilt (DS-Clevis).
121-1910	Console floorplate.



015-3059-RCH



**5005 - Console 1 Package for Chevrolet Tahoe (2015-2020)**

PART NO.	VEHICLE
015-3059-RCH	Tahoe Console - 18" of faceplate (7" slanted and 11" flat) 11-1/4" front height and 8" rear height and 13" wide. Includes dual cup holder and small storage cubby on right hand side in place of map pocket. Also power adapter cutouts and inverter cutout included, Overall console length 21-1/4", overall length including under dash 32-1/2". <i>*Includes radio and blank faceplates up to 18".</i>
121-3505	Padded Armrest Overall dimensions 8-5/8" tall Armrest is 10" long x 4" wide.
710-5906	Lower 5 style mounting pole.
710-5901-9	Upper mounting pole with plate, 8" tall Pole includes 9" plate with 5" of travel.
225-3002	Tilt Swivel for mounting on an upper plate or a Comp-Tilt (DS-Clevis).
121-1905-15	Tahoe Console Floorplate (2015-2020)



**Truck and SUV Consoles  
Command Consoles**

**Features:**

- 14 Ga. Steel Construction
- Powder coated finish
- Computer Mount surfaces
- Map pockets
- Many configurations available



015-3012-L39-11

**5005-21 - Chevy Tahoe 2021+  
Console Package**

**5006 - Dodge Charger w/Slanted Console**

**5007 - Dodge Charger w/Flat Console**

**5008 - Ford F-150 (2021+) and  
Ford Expedition (2018+)**

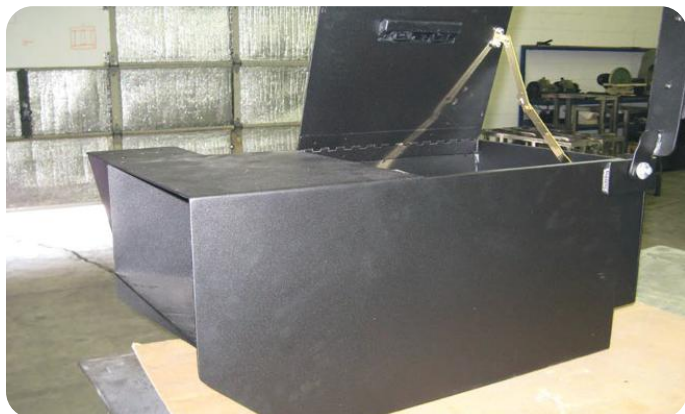
PART NO.	DIMENSIONS
015-3012	25" x 12" x 13-1/4"
015-3012-M34	34" x 12" x 13"
015-3012-L39	39" x 12" x 13"
015-3012-L39-11	39" x 12" x 11"
015-3036	17" x 11" x 13"
015-3011-10TLO	30" x 10" x 13"



## Specialty Consoles

### Features:

- Fully powder coated
- 14 Ga. steel construction
- Armrests
- Locking lids
- Works with specialty applications in utility/work vehicles



*Specialty Consoles*

## Bench Seat Consoles

015-3026

### Features:

- Slanted 10" faceplate area
- Overall dimensions 10" tall x 7 1/2" long
- P/N 015-3026



PART NO.	DIMENSIONS
015-3026-8	8" of Faceplate
015-3020	Console 12" L x 8 5/8" W x 11"-13" H, with 12" of slanted radio faceplate area

We have designed many custom consoles to fit our customers unique needs from utility and electric trucks to ambulances, we can manufacture what you need to be the most efficient. All our consoles are 14 Ga. steel construction with a powder coated finish and can be designed with arm rests, locking lids, trays, special faceplate configurations and more.

## Console Floorplates

PART NO.	VEHICLE
121-1905-15	2015+Tahoe
121-1906	Ford Expedition
121-1907	Ford F250-350
121-1907-17	Ford F250-350 2017 and newer
121-1908	2013 + Ford PI SUV
121-3567	Ford F150
121-3566	Chevy 1500
121-6057	Dodge Ram 4500
121-3568	Dodge Ram



225-3800

## Fire Style Consoles

### Features:

- Fully powder coated
- 14 Ga. steel construction
- Can be custom designed to fit the needs of your department
- File holders
- Book holders
- Pencil holders
- Also available for ambulances

PART NO.	DIMENSIONS
225-3800	72" x 12" x 13-1/4", 42" of faceplate area, printer and computer mount area, clipboard storage.





## CONSOLE ACCESSORIES

### Console Accessories

PART NO.	DESCRIPTION
121-3513	Drop in console tray 1" deep
121-3514	3 hole power adapter faceplate
225-3013	Console extension box 15-1/4" x 12" x 13". Includes clipboard storage and large storage compartment.
225-3013-10	Console extension box 10" x 10" x 8 3/4" – Includes faceplate rails for extra radio space.
225-3013-Small	Console extension box 13" x 8" x 6". Includes storage compartment.
015-3019	Addition of locking lid over map pocket
121-3513-1.5	Drop in console tray 1-1/2" deep
425-6059	Rocker switch plate
060-8088	Faceplate mounted mic bracket

### Arm Rests and Cup Holders

PART NO.	DESCRIPTION
121-3505	Armrest
121-3504	External cup holder
121-3510	Internal cup holder
121-3505-F	Free standing arm rest bracket



121-3504



*B&B Enterprises  
Upper plates  
come in two sizes;  
The 7" plate offers  
3" of total travel  
The 9" plate offers  
5" of total travel*

### Mounts

PART NO.	DESCRIPTION
710-5901	Upper pole 8" with 3" travel
710-5911	Upper pole 8" with 8-1/2" travel
710-5912	Upper pole 8" with 6-1/2" travel
710-5906	Lower pole 5"
225-3002	Tilt swivel assembly



Mounting Example

### Console Lock Boxes

PART NO.	DESCRIPTION
121-3516	8-5/8" W x 4" L x 5-1/2" D
121-3518	8-5/8" W x 6" L x 5-1/2" D
121-3525	8-5/8" W x 9" L x 4" D



## WEAPON ARMOUR® GUN RACK SYSTEMS

Weapon Armour® Gun Racks are designed to be user friendly and can go from vehicle to vehicle or from a Single to a Dual by changing out a few parts. There is no need to reinvest all that money for new gun racks when new vehicles are purchased. B&B Enterprises worked with several large Sheriff's Departments to develop gun racks that fulfilled all their needs. We are confident that it will work for your needs as well.

### Features:

- Fully adjustable gun rack
- Mounts horizontally or vertically
- Works with shotgun style or ar style weapons
- Handcuff, #2, #3, or CA locks available
- Works with all high security guards
- Tamper-proof hardware available
- For use in SUVs and pickup trucks
- We use Santa Cruz gun locks on all our gun racks

### Single Gun Racks

PART NO.	DESCRIPTION
7010-3001	Single Gun Rack AR weapons SC1 Partition Mounting
7010-3001-5	Single Gun Rack AR weapons SC5 partition Mounting
7010-3001-F	Free Standing Single Gun Rack SC1
7010-3001-FSC5	Free Standing Single Gun Rack SC5
7010-3001-FUV	Free Standing Single Gun Rack for a Ford Interceptor SUV with an SC1
7010-3007	Single Gun Rack for an AR, Includes High Security Guard SC1 lock, horizontal or Partition mounting
7010-3008	Single Gun Rack for an AR, Includes High Security Guard SC6 lock, horizontal or Partition mounting, perfect for short barreled weapons
7013-3001	28" Universal Surface Mount Single gun rack includes High Security Guard and SC5 lock. Great for mounting to the side of K9 kennels or boxes.



SC-6

7010-3001



7010-3001-FSC5



7010-3007





### Dual Gun Racks

PART NO.	DESCRIPTION
7010-3030	Dual Gun Rack for shotgun and AR, partition or horizontal mount SC1
7010-3030-5	Dual Gun Rack for shotgun and AR, partition or horizontal mount SC5
7010-3012-C	Free Standing Dual Gun Rack for shotgun and AR SC1
7010-3012-5	Free Standing Dual Gun Rack for shotgun and AR SC5
7010-3012-HSG	Free Standing Dual Gun Rack for shotgun and AR Includes High Security Guard SC1
7010-3030-FUV-	Free Standing Dual Gun Rack for shotgun and AR SC1 to fit a Ford Interceptor SUV

### Gun Rack Floor plates

Gun Rack Floor plates are needed for Free Standing gun racks or horizontally mounting gun racks behind the front seat.

PART NO.	DESCRIPTION
7010-B-6000	Ford F150 – 2014 and older
7010-B-6000-15	Ford F150 – 2015+
7010-B-6003	Ford F350
7010-B-6007	Ford F250
7010-B-6015	Ford Civilian Explorer
7010-6002	Ford Expedition
7010-B-6001	Chevy Tahoe 2014 and older
7010-B-6001-15	Chevy Tahoe 2015+
7010-B-6012	Chevy Silverado 2014 and older
7010-B-6012-15	Chevy Silverado 2015+
7010-B-6019	Chevy 3500 2015+
7010-B-6017	Chevy Traverse 2014+
7010-B-6009	Dodge Durango
7010-B-6011	Dodge Ram 1500 2014+
7010-B-6018	Nissan Titan 2015+
7010-B-6013	Toyota Tundra 2015+
7010-B-6008	Dodge Ram2500 2013+



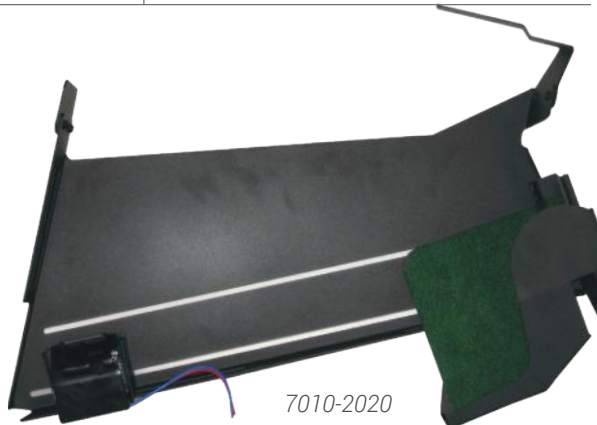
*Gun Rack in Truck*



## Trunk Mounted Gun Racks

Great for added security or special applications such as detective or undercover cars.

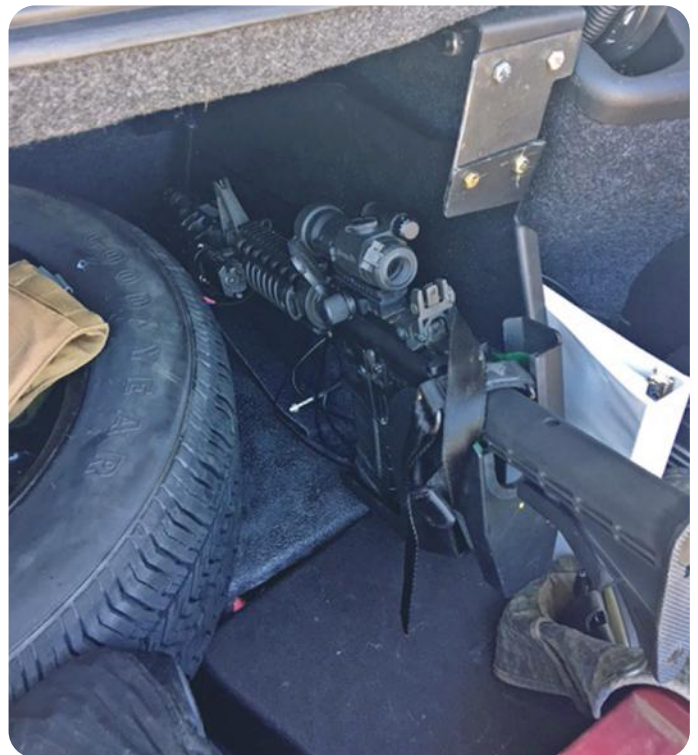
PART NO.	DESCRIPTION
7010-2017	Trunk Mounted Single AR Gun Rack Ford Taurus (2014+)
7010-2018	Trunk Mounted Single AR Gun Rack Nissan Altima (2014+)
7010-2020	Trunk Mounted Single AR Gun Rack Toyota Avalon (2014+)
7010-2021	Trunk Mounted Single AR Gun Rack Dodge Charger (2016+)
7010-2022	Trunk Mounted Single AR Gun Rack for Truck Bed – fits F150, Dodge Ram, and Chevy Silverado (2014+)
7010-2024	Trunk Mounted Single AR Gun Rack Dodge Challenger (2016+)
7010-2025	Trunk Mounted Single AR Gun Rack Ford Mustang (2016+)
7010-2027	Single Gun Rack, Weapon Armour® - High Security Guard, Double Mag / Side Mounted, Trunk (Impala)
7010-2028	Single Gun Rack, Weapon Armour® - High Security Guard, Double Mag / Side Mounted, Trunk (Toyota Camry)



7010-2020



7010-2017



7010-2021



## **WEAPON ARMOUR® HIGH SECURITY GUARDS**

A gun rack without a high security guard can be an invitation, with the pins exposed it can take a criminal less than 30 seconds to remove the pins, dismantle the AR and reassemble it outside of the gun rack and the vehicle. Don't leave your AR exposed.

The Weapon Armour® High Security Guard works with all gun racks and can be added to any model.

### **Features:**

- Several designs available to meet your needs
- Pin protection
- Mag Protection
- Heavy gauge steel
- Fully powder coated
- Felt lined
- Can be used on all Weapon Armour® Gunracks



*Dual Mag*





7013-3001

**Universal Mount Gun Racks with Built In High Security Guard.**

PART NO.	MOUNT
7013-3001	28" Long with SC#1 Gun Lock
7013-3002	21" Long with SC#5 Gun Lock



AR-15 High Security Guard and Standard Barrel locks.



7003-3111

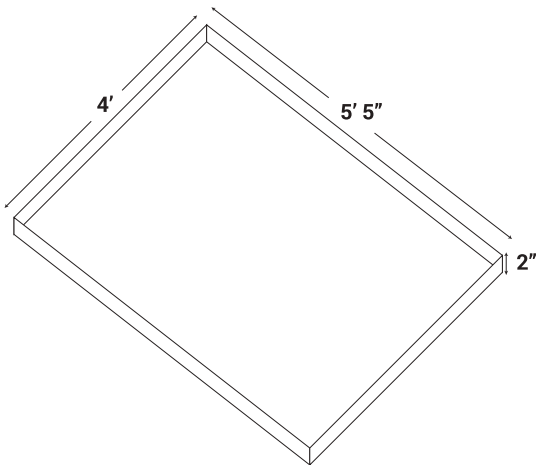


## STANDARD HEAVY DUTY STEEL PANS

### Standard Steel Pans with 2" Sides

#### Features:

- 14 Ga. steel construction
- Fully powder coated for durability
- Use with Heavy Duty Slider to expand storage space in the rear of your vehicle
- Can be customized to fit your needs
- Available options include: dividers, sidewall dimensions, screen guards



Dual Deck Pans and Custom Designed Pans are our specialty. From SCBA units, Dive units, Traffic Investigation Units to Forestry units we have designed unique pans to fit the needs of most departments. When your equipment is stored in an orderly fashion the response time is reduced and your job is more efficient.



015-4955



161-2509-65



225-2027

PART NO.	DIMENSIONS
161-4854	48" W x 58" L w/2" lip
161-4849-2	48" W x 65" L w/2" lip
161-4875	48" W x 75" L w/2" lip
161-4865-6	48" W x 68" L x 6" sides
161-4875-4S	48" W x 75" L x 4" sides
161-4894-2	48" W x 94" L w/2" lip

Custom Sizes Also Available.



## SPECIALTY & CUSTOM PANS

### Scale Pans

#### Features:

- Heavy duty steel construction
- Used with heavy duty slider
- Scale storage
- File storage
- Can be configured to your needs.
- Side access storage
- Lock box
- Rear cone storage with screen
- Can be configured for shortbed pickup

PART NO.	DESCRIPTION
161-4875-4	48" x 75" Scale storage, four drawers and rear cargo storage
015-4837	48" W x 41" L x 21" H Dual Deck Scale Pan with fold down white board, rear storage area and back board storage. For rear of Expedition
015-4835	48" x 65" Scale Pan, Includes Room for 6 Haenni scales in the front and a side drawer (11" x 38" D) for misc storage. Creeper storage on top and rear storage area 26-1/2" wide with expanded metal safety screen.
161-4895	48" W x 75" L x 16" H Scale pan with 1 drawer, lockable storage and cone storage.



015-4837

### Heavy Duty Bomb Pan

#### Features:

- Custom pan designed for bomb squads
- Two or three pull out drawers
- Stainless steel t-handle locks
- Dual deck storage pan in rear
- Screen guards
- Overall height is 32"
- Fully powder coated
- Can be customized to fit your needs
- Must use the extra heavy duty bomb slider
- Constructed of 11 Ga. material
- Daybox included in design
- White board options available

PART NO.	DESCRIPTION
MCSO4844	48" W x 44" L with two drawers, on drawer with weapon slot and second drawer wood lined boxes for Expedition
161-4894-3	Three drawer bomb pan 48" W x 94" L overall. Front drawer is 48" W x 16" L x 12-1/2" H. 2" lip around top of front box and equipment screen. One side box located on each side (26" W x 22" D x 12-1/2" H) each drawer includes a wood lined daybox and separate divided storage area. 40" rear single deck storage area with side Rails for tie downs and a rear equipment screen.
161-2509-65	48" x 65" x 14-1/2" ( 1-1/2" lip) Tall Custom Bomb Pan - Includes one rifle storage box (16" W x 52" L w/42" glides) located on drivers side and a storage drawer (32" W x 30" D) located on passenger side. a dual wood lined bomb drawer located behind the storage drawer. Balance of pan will be open storage area (approx. 13"). Expanded metal rear screen, powder coated finish, T-handle locks and heavy duty glides. (Chevy 1500 truck with Tonneau Cover).





161-4894-3



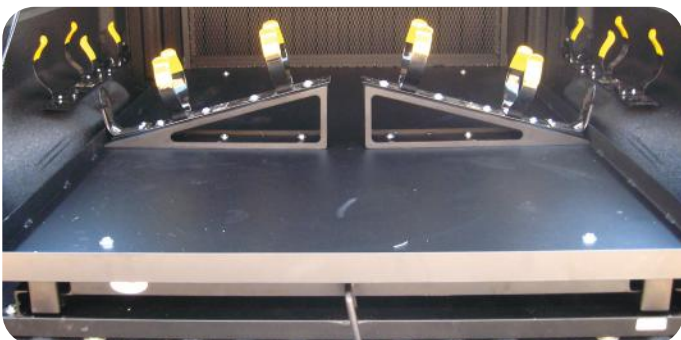
015-4835

### SCBA Pans

PART NO.	DESCRIPTION
161-4872GFD	48" W x 72" L Dual Deck Pan with SCBA, Truck with Camper shell
161-4875-SCBA	48" W x 75" L with two open compartments, slanted SCBA holders and rear cargo screen.
060-2000	48" W x 75" L Dual Deck Pan with four drawers and air tank storage.
015-4955	48" W x 75" L slanted SCBA holders and storage compartments

### Misc Pans

PART NO.	DESCRIPTION
225-2027	48" x 75" Dual Deck with dividers on lower level, upper level with side rails and safety screen
015-4859	CSI unit Pan – 48" W x 75" L x 16" H, one large front drawer, lockable side storage, Large rear storage area.
161-4875-P	48" W x 75" L with two drawers on one side and one large storage compartment on the other.



161-4875-SCBA



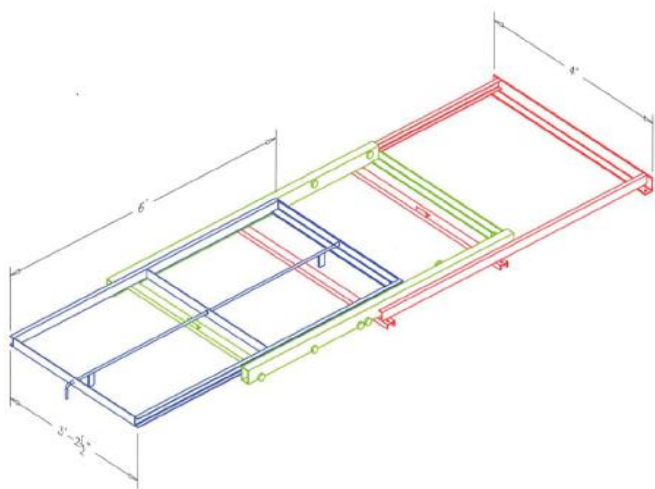
015-4859



## HEAVY DUTY SLIDERS

### Features:

- Three piece construction
- 90% pull out
- Heavy duty bearings
- 1/8" steel construction
- Two locking positions
- Powder coated for durability
- 1500lb capacity (weight must be evenly distributed)
- When purchasing a slider and pan together the slider is generally three inches shorter than the pan.



PART NO.	DIMENSIONS
225-1940	48" x 40" Heavy Duty Slide (SUV)
225-1953	48" x 53" Heavy Duty Slider
225-1962	48" x 62" Heavy Duty Slide
225-1972	48" x 72" Heavy Duty Slide
225-1991	48" x 91" Heavy Duty Slide



### Extra Heavy Duty Sliders

- 1800 lb weight capacity - evenly distributed
- 3/16" steel construction
- Holds up to the extra weight many bomb squads carry
- 90% pull out

PART NO.	DIMENSIONS
225-1972-SHD	48" x 72" Super HD Slide
225-1991-SHD	48" x 91" Super HD Slide

### Heavy Duty Split Sliders

Sliders designed to pull out in two sections

PART NO.	DIMENSIONS
225-1975 Split	48" x 75" L one side 30" W and one side 15" W







## STORAGE BOXES

B&B Enterprises offers many different storage solutions for whatever your storage needs may be:

### Features:

- Full size, half size and quarter size storage boxes
- 16 Ga. and 14 Ga. steel construction with aluminum options also available
- Welded and powder coated for durability
- Foam lined, wood lined, or dividers
- Organize and secure your gear
- Heavy duty (500 lb) glides used in all drawers
- Rubber edged drawers to prevent vibration
- Install frames are included when needed so box can be installed in 20 minutes. Safely and securely.
- Tie down points located on top of box
- Single, double, triple drawers and more.
- Simplex locks available on request



225-2467-LO



225-2104-15

### Single Drawer Storage Boxes

PART NO.	VEHICLE	SIZE
225-2047	Ford Expedition	44" x 29" x 16-1/2" w/2" lip
225-2091	Chevy Tahoe	24" W x 29" L x 16-1/2" H, half box

PART NO.	VEHICLE	SIZE
225-2059-21-LO	Chevy Tahoe	42" x 29" x 16-1/2" with lock out glides
225-2059-21	Chevy Tahoe 2021+	42" x 29" x 16 1/2" w/2" lip
225-2091-21	Chevy Tahoe 2021+	24" x 29" x 16-1/2" w/2" lip
225-2104-21	Chevy Tahoe	42" x 29" x 16-1/2" wood lined
225-2302-22	Dodge Durango Civilian	36" x 22-1/2" x 16-1/2" w/2" lip
225-2302-36-PPV	Dodge Durango	36" x 29" x 16-1/2" w/2" lip
225-2309	Chevy Tahoe	44" x 36" x 11-1/2" T
225-2339-44T	Truck bed	44" x 29" x 15" Flat top
225-2349	Toyota Highlander	38" x 29" x 13"
225-2352	Chevy Traverse	37" x 30" x 16-1/2" single drawer, w/2" lip
225-2424-20	Ford Explorer Civilian (2020+)	36" L x 22-1/2" W x 13" H, w/2" lip
225-2467-LO	Single Drawer Box	44" x 42 1/2" x 16 1/2" w/2" lip



**Miscellaneous Vehicles/Sedans**

PART NO.	VEHICLE	SIZE
225-2023-16	Ford Edge	36" x 29" x 15-1/2" w/2" lip
225-2116	Hyundai Sonata	Single Drawer Box for Trunk. 31" x 18-1/2" x 12" Tall, Flat Top, T-Handle locks and Install frame included.
225-2311-17	Ford Taurus	36" x 22-1/2" x 10" Flat Top
225-2323	Dodge Charger	34" x 16-1/2" x 10"
225-2328	Ford Fusion	35" x 21" x 10" Flat Top
225-2329	Toyota Camry	Single Drawer Box for Trunk. 40" W x 14" L x 12" H Flat top.
225-2372-GC17	Grand Cherokee (2017/2018)	36" x 30" x 15" w/2" lip
015-2455-18T	Dodge Caravan	44 1/2" L x 37" W x 16-1/2" H including 2" lip, Includes install/support frame and Stainless Steel T-Handle Lock. (Third Row Seats Removed) 2018+
015-2465	Ford Escape (2018)	35" x 25" x 14-1/2" w/2" lip
225-2468	Jeep Cherokee Latitude (2014-2018)	33-1/2" x 25" x 14" w/2" lip
015-2469	Chevy Malibu (2018)	34" x 16-1/2" x 10" Flat Top
225-2503	GMC Acadia	48" x 37" x 16-1/2" w/1-1/2" lip



225-2311-17



225-2372-GC17



015-2465



225-2323





225-2059-15



225-2371-T



225-2309



225-2348

### Dual Drawer Boxes

PART NO.	VEHICLE	SIZE
225-2090-21	Chevy Tahoe 2021+	42" x 24-1/2" x 16-1/2"
225-2092-225-TH	Chevy Tahoe	Two drawer box. 17" x 43" x 24" w/2" lip. Top drawer ~5 3/4" tall and bottom drawer ~11 3/4" tall. Fully powder coated. T-handle locks. (Made to work with American Aluminum K9 cage (Split design) and mounted on drivers side of cargo area.
225-2299-21	Chevy Tahoe 2021+	Two Drawer Bomb/Swat Box, 42" W x 34-1/2" D x 16-1/2" H w/2" lip. Includes one drawer 17" wide with two wood lined day-boxes (ATF specs 555-209) and wood lined locking lids. The second drawer is 19" wide for storage.
225-2303	Truck Bed	48" x 62" x 10" Side x Side
225-2319-3	Truck Bed	48" x 48" x 14" side x side
225-2365B	Truck Bed	44" x 29" x 20" Flat Top Stacked drawers.
225-2371-T	Chevy Tahoe	Three drawer. 48" x 37" x 18-1/2" w/2" lip, T-handle locks. One drawer located on left side of box and two drawers on the right side.
225-2402-DIV	Chevy Tahoe 2021+	42" x 34" x 23" Alum, vented with equipment drawer.
015-2430-3	Truck Bed	48" x 65" x 12" w/2" lip.
015-2460-2	Short Truck Bed	48" x 61" x 16" tall includes 2" lip - two drawer box (side by side)
015-2526	Truck Bed	Two Drawer. 24" x 36-1/2" x 18" w/2" lip. Drawers are 6" deep, one above the other. Includes truck bed mount (passenger side), T-handle locks, and install rails.



### **Ford Interceptor SUV Boxes and Platforms**

All interceptor boxes allow for access to the spare tire with a lift up platform or a lift off panel.

PART NO.	DESCRIPTION
225-2373	Single drawer 36" x 28-1/2" x 15-1/2" w/2" lip. 2013-2019
225-2375	Dual Drawer 36" x 28-1/2" x 18" w/2" lip
225-2375-C4	40" x 25" x 19" Command Box w/ white board and faceplates
225-2383	Single drawer box with side Open storage
225-2422-20	Dual drawer with vented equipment drawer 36" x 18-1/2" x 18-1/2" - Aluminum



225-2383



225-2373-20



225-2422-20





## Command Boxes

Custom designed command boxes include: white boards, laptop shelves, file drawers, radio mounting, map drawers, weapon storage and more. 14 Ga. Steel and welded construction, T-handle locks or Simplex locks available. Installs in less than 30 minutes, fully powder coated, can be used with or without a slider.

Tell us what functions you need and the make of vehicle and we can provide a quote.

PART NO.	DESCRIPTION
015-2432-15	Tahoe – 44" x 29" x 22" with one large drawer on bottom and one pull out white board drawer (approx 34" x 29" x 4") on top with radio faceplate located in upper right corner. Heavy duty glides, rubber channel around the drawers and is powder coated for durability.
015-2501	44" x 30" x 26" w/2" lip. Drawer consists of 3 radio faceplates along top edge, 1 pull out tray, 1 white board drawer, 1 pull out work surface, and two locking storage drawers. Upper left hand corner is recessed with back mounting board for screen mounting and computer surface. Fully powder coated.
015-4406	Three Drawer. Includes one 12" deep half drawer on left side and a pull-out laptop tray on right side and a full size upper white board. 44" x 29" x 21" w/2" lip.
015-4408-R21	Three drawer. Includes lower full width map drawer, upper half width non-locking storage drawer, small pencil drawer and upper right hand faceplate. 44" x 29" x 13" w/2" lip. Bottom map drawer is 40" x 26", storage drawer is 16" x 22". Powder coated Finish and Install Frame included.

PART NO.	DESCRIPTION
015-4841	Tahoe – 44" x 29" x 32" Command Unit
015-4963	Storage Box 44" x 29" x 24" tall - Includes one large storage drawer and one pop up white board drawer, and one upper pull out tray with 8" tall screen sides. Fully powder coated for durability. (2015 and newer Tahoe)
015-4963-2B	Storage Box 44" x 32-1/2" x 24" tall - Includes one large storage drawer (13-1/2" deep) with weapon slot and one pop up white board drawer (4" deep), and one upper pull out tray with 4" tall sides. Fully powder coated for durability. (Tahoe)
060-8011-F150-34	Under rear seat box for a Ford F-150. Only 34" long fits under the 2/3 section of the rear seat.



015-4963



060-8011-F150-34



## UTILITY AND WORK TRUCK ACCESSORIES

- Truck headache racks
- Arrowboard, beacon light, and custom racks
- Oversize load signs
- Heavy duty steel construction
- Fully powder coated

Headache Racks available for any size or model Chevy, Ford, and Dodge trucks.

Utility trucks and trailers, side boxes, installed cabinets, and equipment storage; B&B Enterprises has a lot of experience in helping you store your gear. We offer cost saving suggestions and all of our units can be transferred to another vehicle if the need arises.

PART NO.	DESCRIPTION
225-8102	Arrowboard Frame 60" W
225-8103	Headache Rack with Beacon light
225-8110	Custom headache rack for a Dodge Ram



225-8102



225-8103



Sliders and Pans are a great addition to any work truck, saving your back and saving you time.

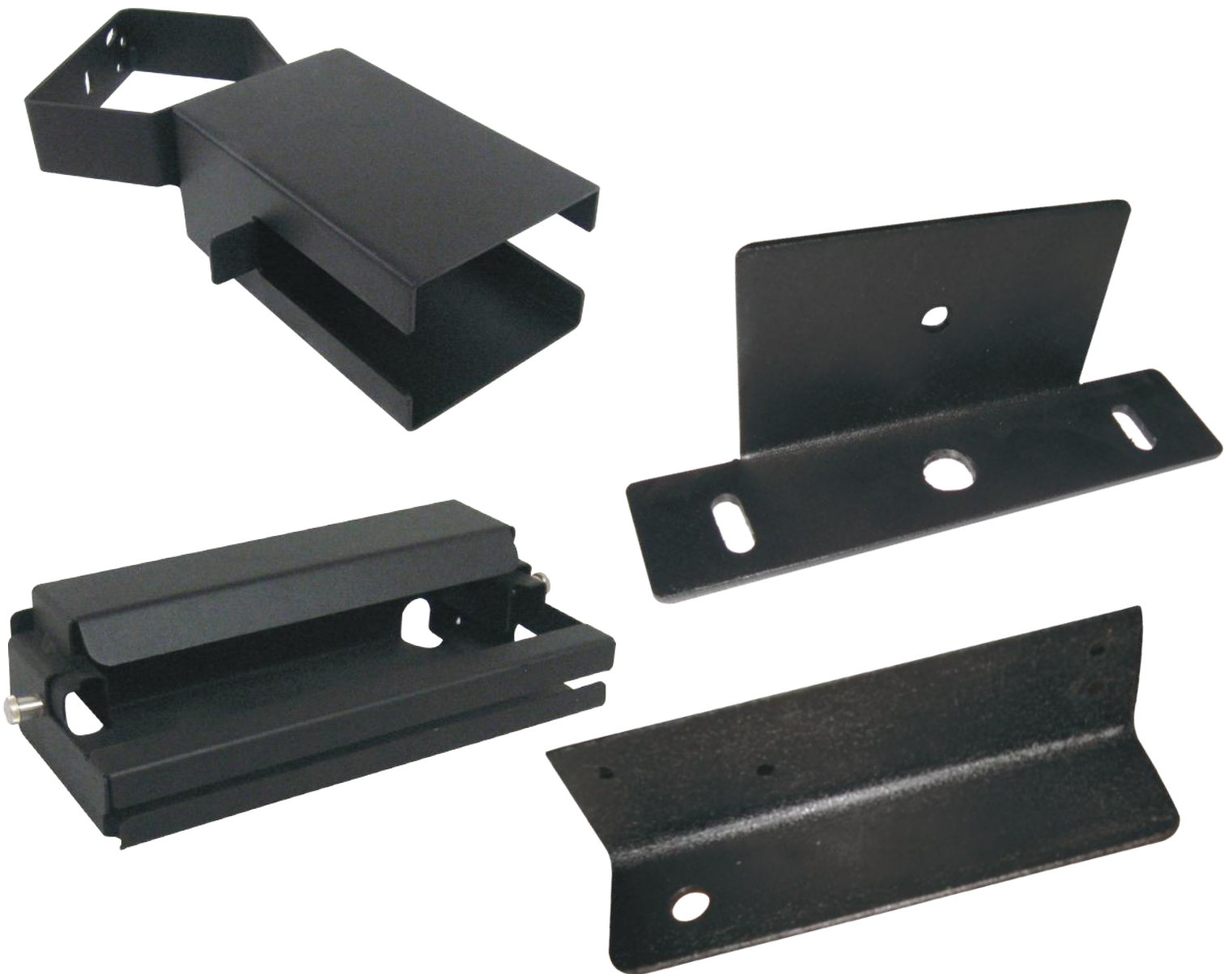
Communication mounts including antenna masts and satellite mounts.

B&B Enterprises has manufactured many custom items for many different utility trucks from custom printer and computer mounts to water coolers. Bring us your idea and we will be happy to work with you.

- Pull out air compressor slides
- Custom Trailer Storage Shelving and Racks
- Don't forget all our slider and pans as well.

## **BRACKETS AND ACCESSORIES**

B&B Enterprises manufactures hundreds of brackets for everything from radar guns to lights, speakers, flashlights and printers. If your looking for something special just give us a call, *we probably already have it.*











**Proudly Made in the USA**



**[www.bbenterprisesinc.com](http://www.bbenterprisesinc.com)**



B&B Enterprises, Inc  
4120 E. Winslow Ave.  
Phoenix, AZ 85040  
Phone: 602-414-9973  
[sales@bbenterprisesinc.com](mailto:sales@bbenterprisesinc.com)